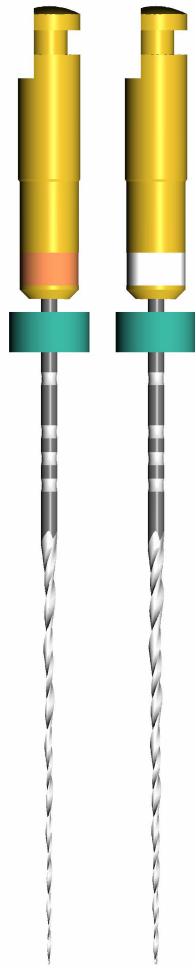




Your Endo Specialist™



G-Files

New rotary NiTi files to create the glide path



Sanavis Group

G-Files



Your Endo Specialist™

- Description
- Protocol
- Summary of advantages
- Clinical cases / SEM views
- Additional points



Sanavis Group

G-Files description



Your Endo Specialist™



➤ Rotary glide path of the root canal prior to use rotary NiTi systems.

➤ 2 rotary NiTi files – 3% - n° 12 and n° 17

G1

N° 12 3%
L25mm

G2

N° 17 3%
L25mm

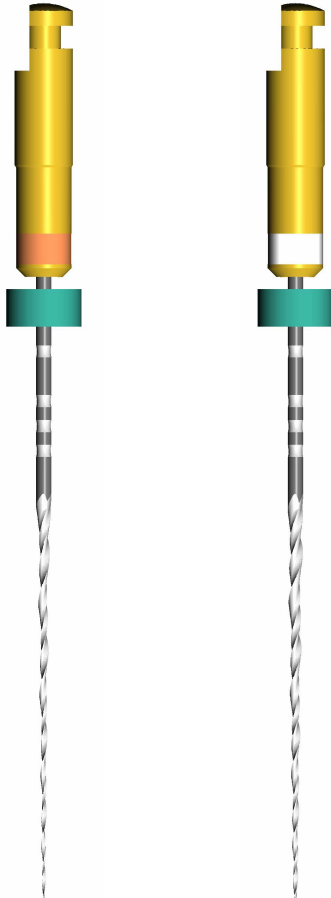


Sanavis Group

G-Files description



Your Endo Specialist™



G1

N° 12 3%
L25mm

G2

N° 17 3%
L25mm

➤ Aim

- Intended for difficult root canal anatomies, thin and calcified canals.
- The file creates a rotary glide path thus avoiding the passage of hand files n° 15 and 20.
- Safety of NiTi.
- Can be used in combination with other NiTi rotary systems.



Sanavis Group

G-Files description

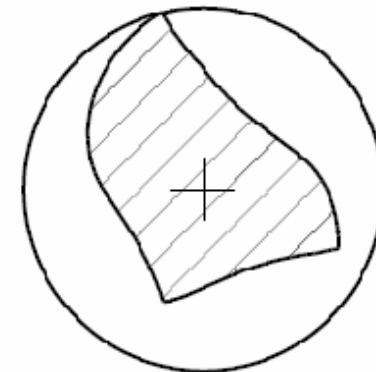
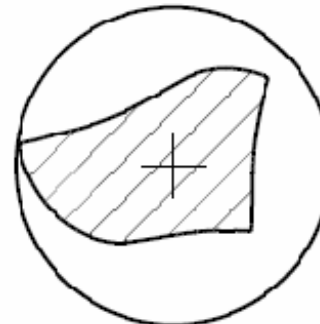
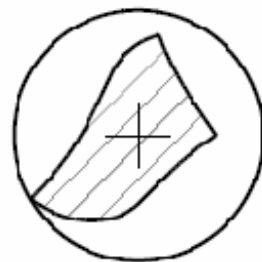
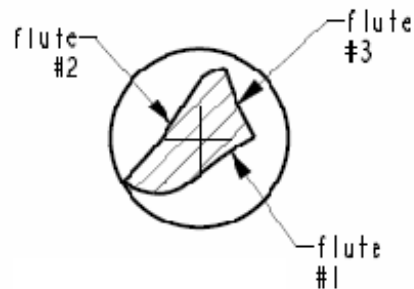
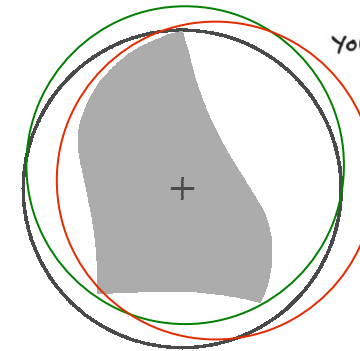


Your Endo Specialist™

Unique and innovative characteristics:
CROSS SECTION

An evolving cross section which varies along the instrument:

- More space for better debris elimination
- Excellent cutting action
- Snake like behavior = the 3 cutting edges are located to the canal axis on 3 different radiuses



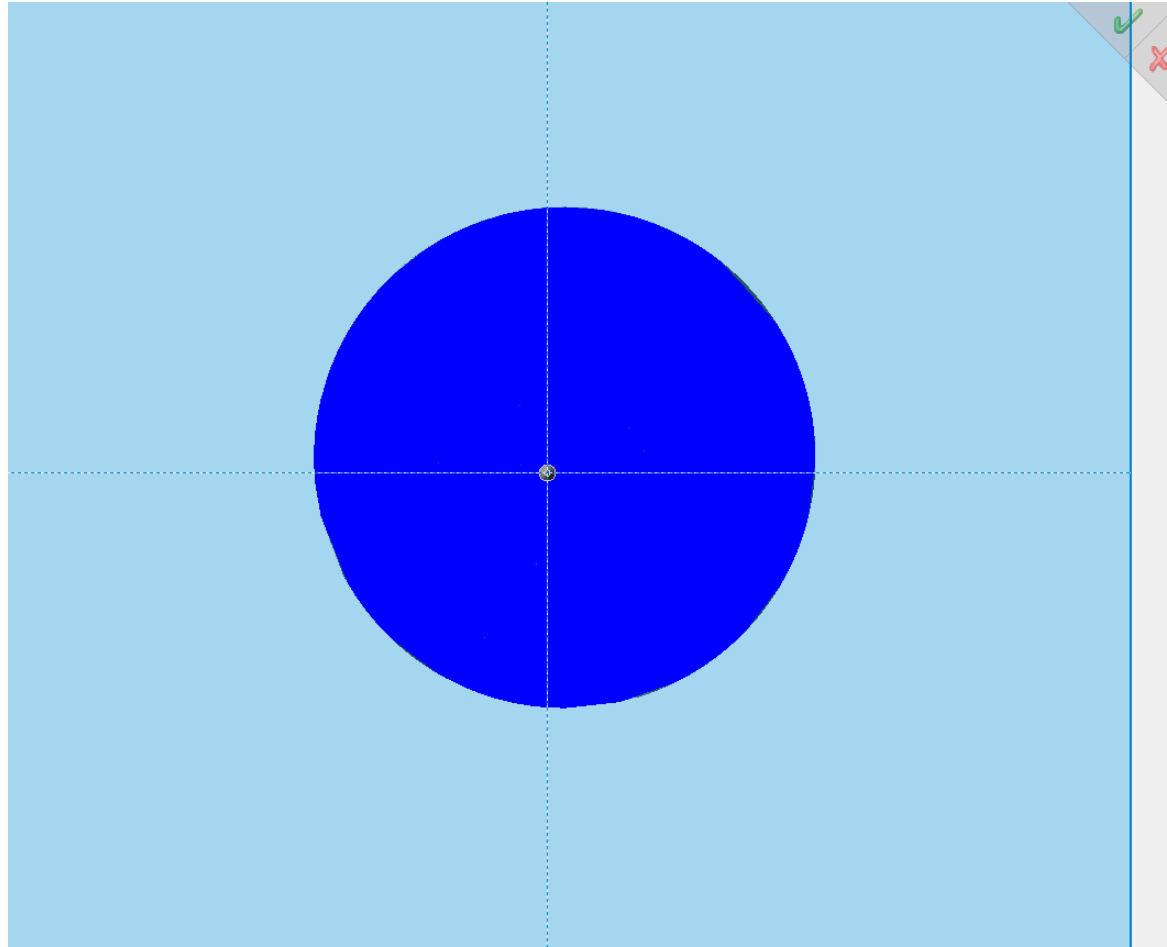
Sanavis Group

G-Files description



Your Endo Specialist™

Innovative cross section



Sanavis Group

G-Files description



Your Endo Specialist™

An innovative pitch design

➤ Instruments with a cutting length formed by 3 flutes having the same pitch but having 3 different apparent pitches (the apparent pitch being the distance between 2 consecutive cutting edges)



➤ Instruments where the angles of the cutting edges are all different whatever the cross section.



➔ NO SCREWING EFFECT



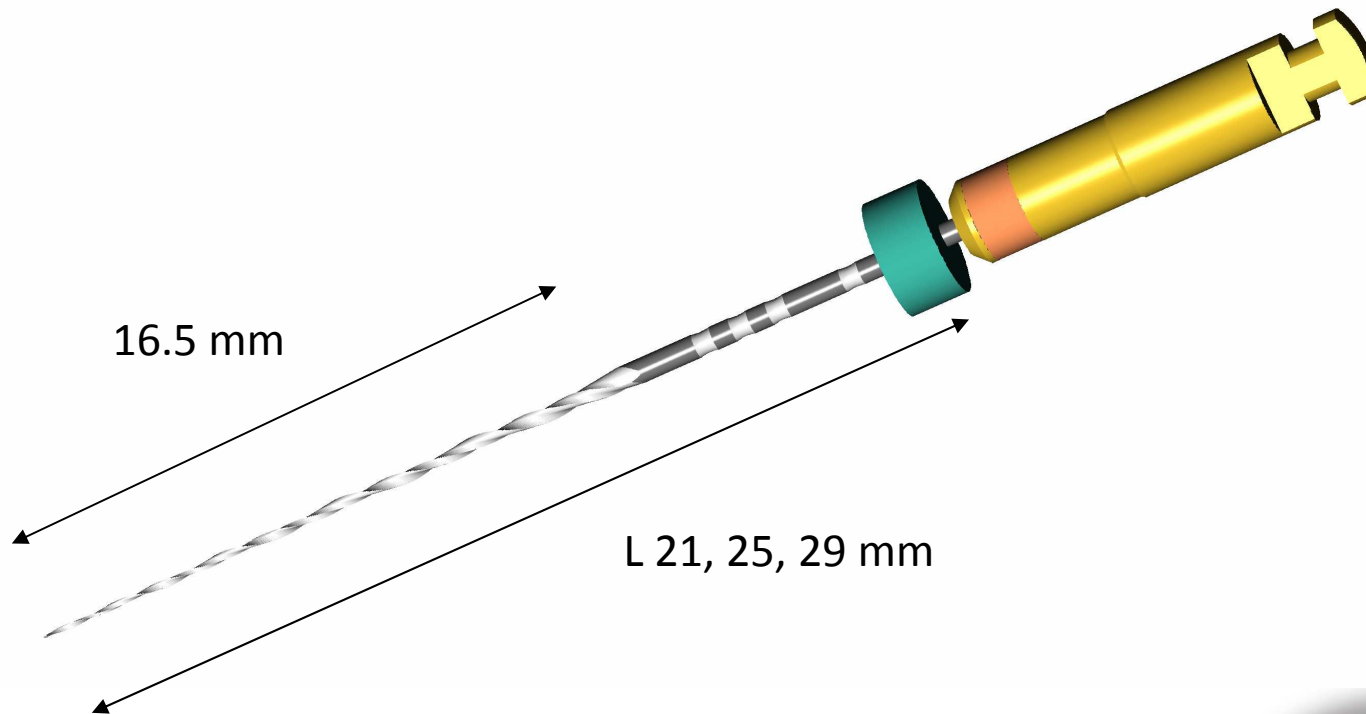
Sanavis Group

G-Files description



Your Endo Specialist™

G1



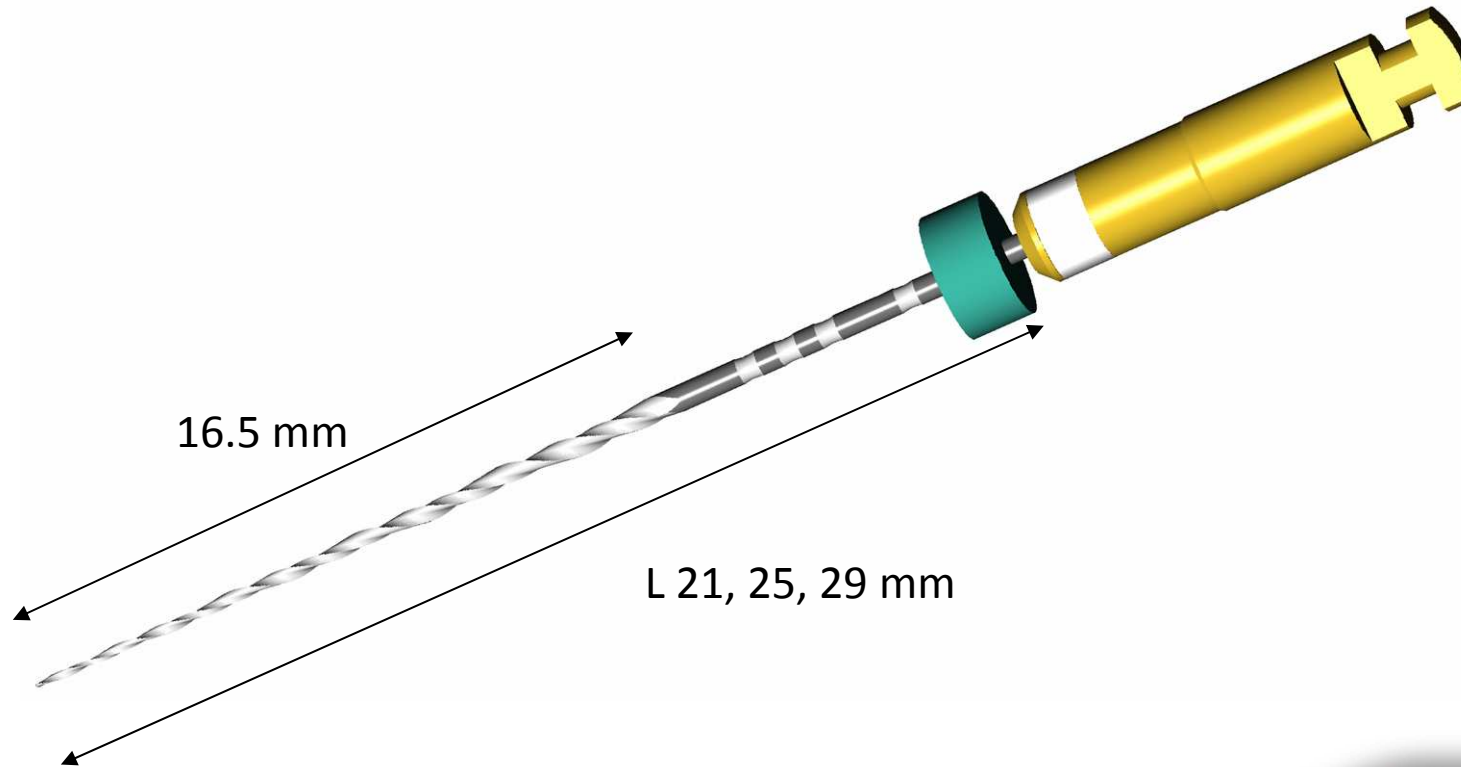
Sanavis Group

G-Files description



Your Endo Specialist™

G2



Sanavis Group

G-Files



Your Endo Specialist™

- Description
- **Protocol**
- Summary of advantages
- Clinical cases / SEM views
- Additional points



Sanavis Group

G-Files Protocol



Your Endo Specialist™



**K-Files (MMC)
up to n° 10**

G1 and/or G2

PROTOCOL

- Establish a manual glide path with standard stainless steel K-Files (MMC) up to n° 10.
- Use G1 and/or G2.



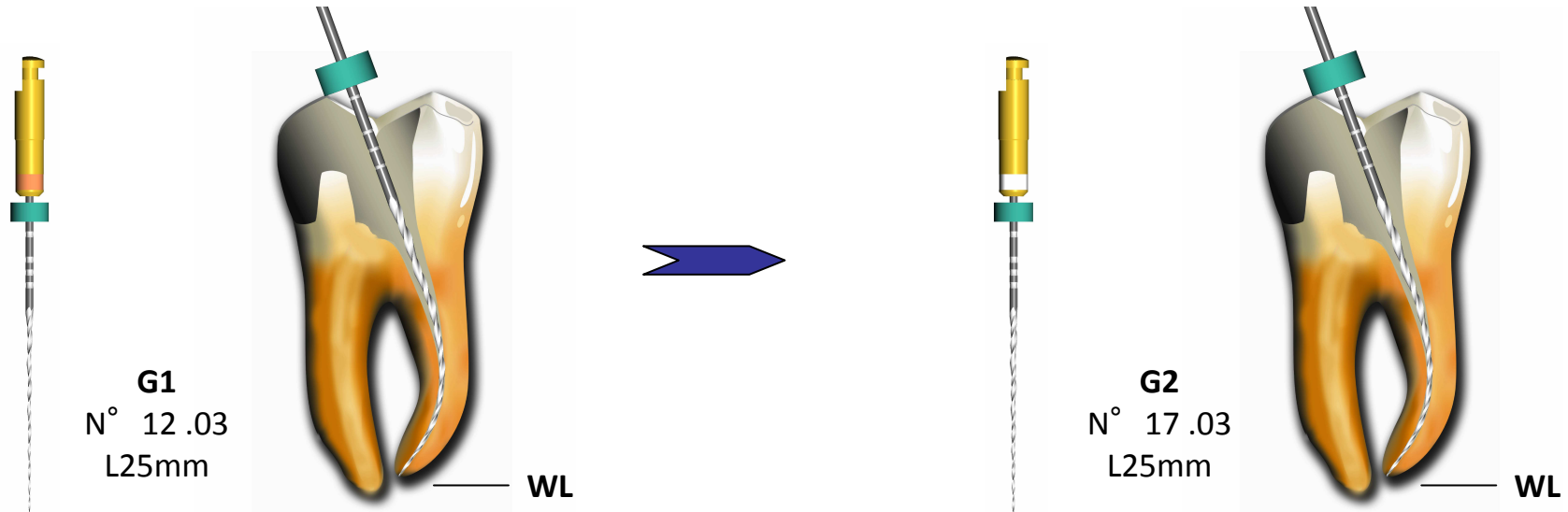
Sanavis Group

G-Files Protocol



Your Endo Specialist™

PROTOCOL



- **Rotation speed: 400 rpm**
- **1.2 Ncm torque**
- **Slow and unique downward movement in a free progression and without pressure.**
- ➔ **In case of too high resistance, withdraw the file from the canal and restart the movement.**

- **Then use Revo-S™ or any other NiTi rotary system.**



Sanavis Group

G-Files



Your Endo Specialist™

- Description
- Protocol
- **Summary of advantages**
- Clinical cases / SEM views
- Additional points



Sanavis Group

Summary of advantages



Your Endo Specialist™

- A sequence composed of only 2 files (vs Pathfiles from Maillefer = 3 files).
- G-Files are an answer for the treatment of difficult cases/calcified canals which cannot always be treated with the Revo-S™ basic sequence SC1-SC2-SU.
- G-Files can be used in combination with any NiTi sequence.
- The files create a rotary glide path thus avoiding the passage of hand files n° 15 and n° 20.
- Safety of NiTi.
- An innovative pitch design:
 - No screwing effect.
- Unique and innovative characteristics: An evolving cross section which varies along the instrument:
 - More space for better debris elimination.
 - Excellent cutting action.
 - Snake like behavior = the 3 cutting edges are located to the canal axis on 3 different radiuses.



Sanavis Group

G-Files



Your Endo Specialist™

- Description
- Protocol
- Summary of advantages
- **Clinical cases / SEM views**
- Additional points

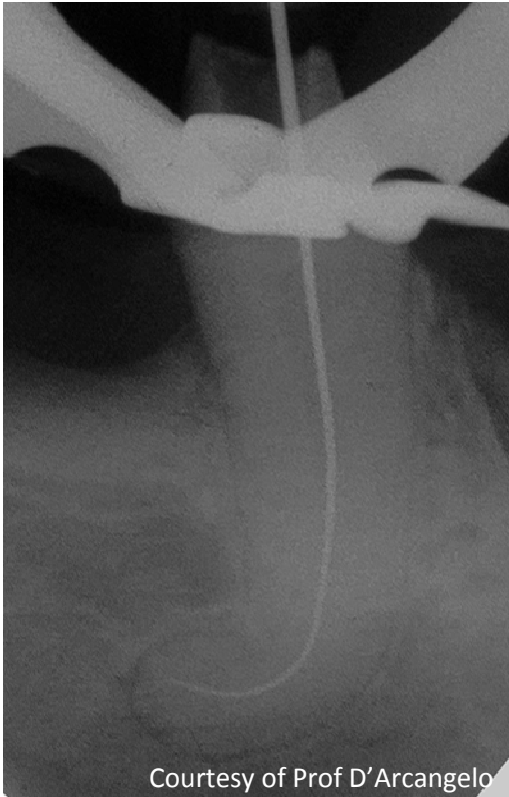


Sanavis Group

G-Files clinical cases



Your Endo Specialist™



Courtesy of Prof D'Arcangelo

Fig.1 Canal exploration and working length assessment of a 3.5 (LL5).



Courtesy of Prof D'Arcangelo

Fig.2 Post operative view after having used G-Files to obtain a right glide path, Revo-S to shape the root canal and HEROfill for canal filling.



Sanavis Group

G-Files clinical cases



Your Endo Specialist™



Courtesy of Prof D'Arcangelo

Fig.3 Canal exploration and working length assessment of 4.6 (LR6).



Courtesy of Prof D'Arcangelo

Fig.4 post operative view after having used G-Files to obtain a right glide path, Revo-S to shape the root canal and HEROfill for canal filling.



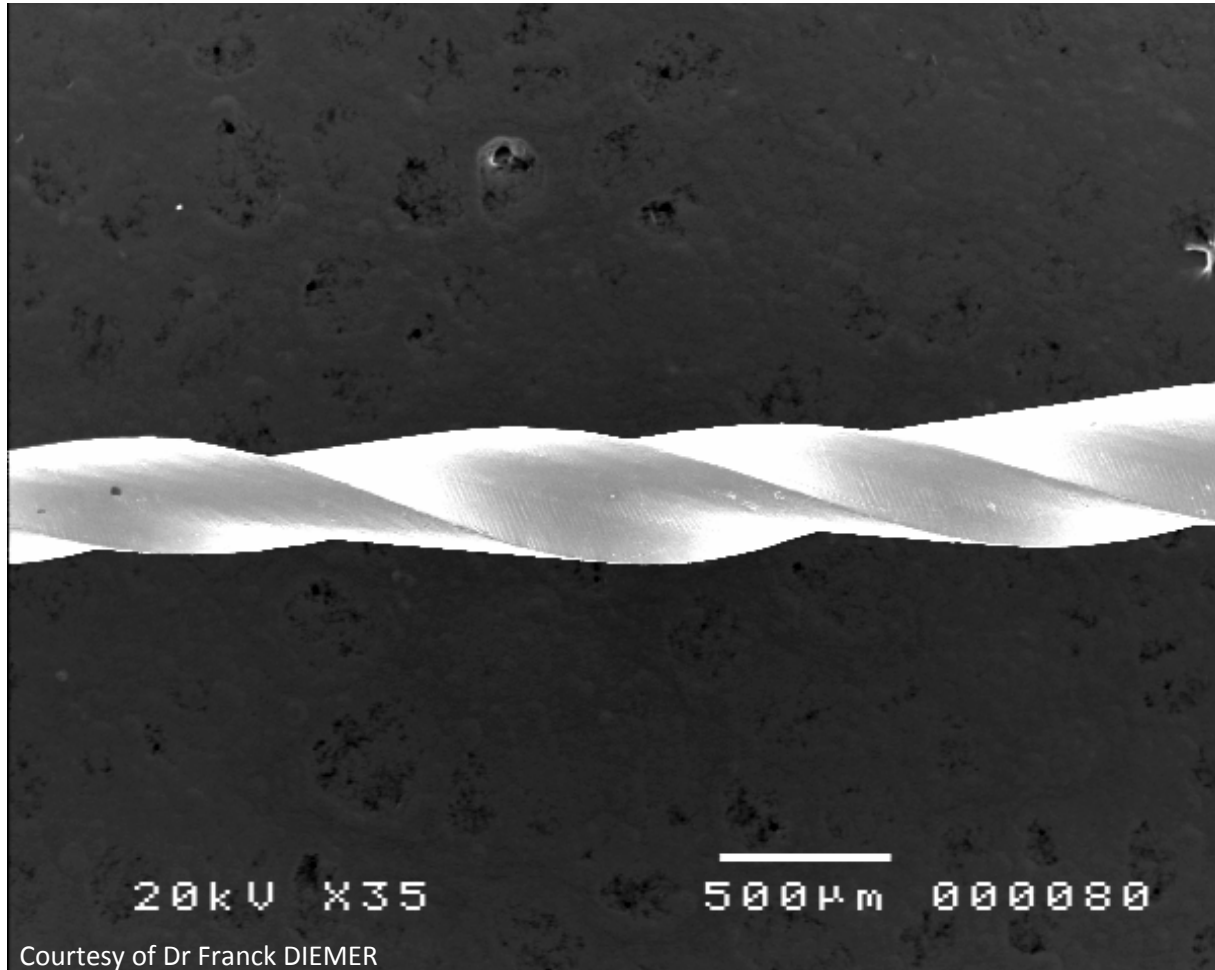
Sanavis Group

G-Files SEM views



Your Endo Specialist™

G1



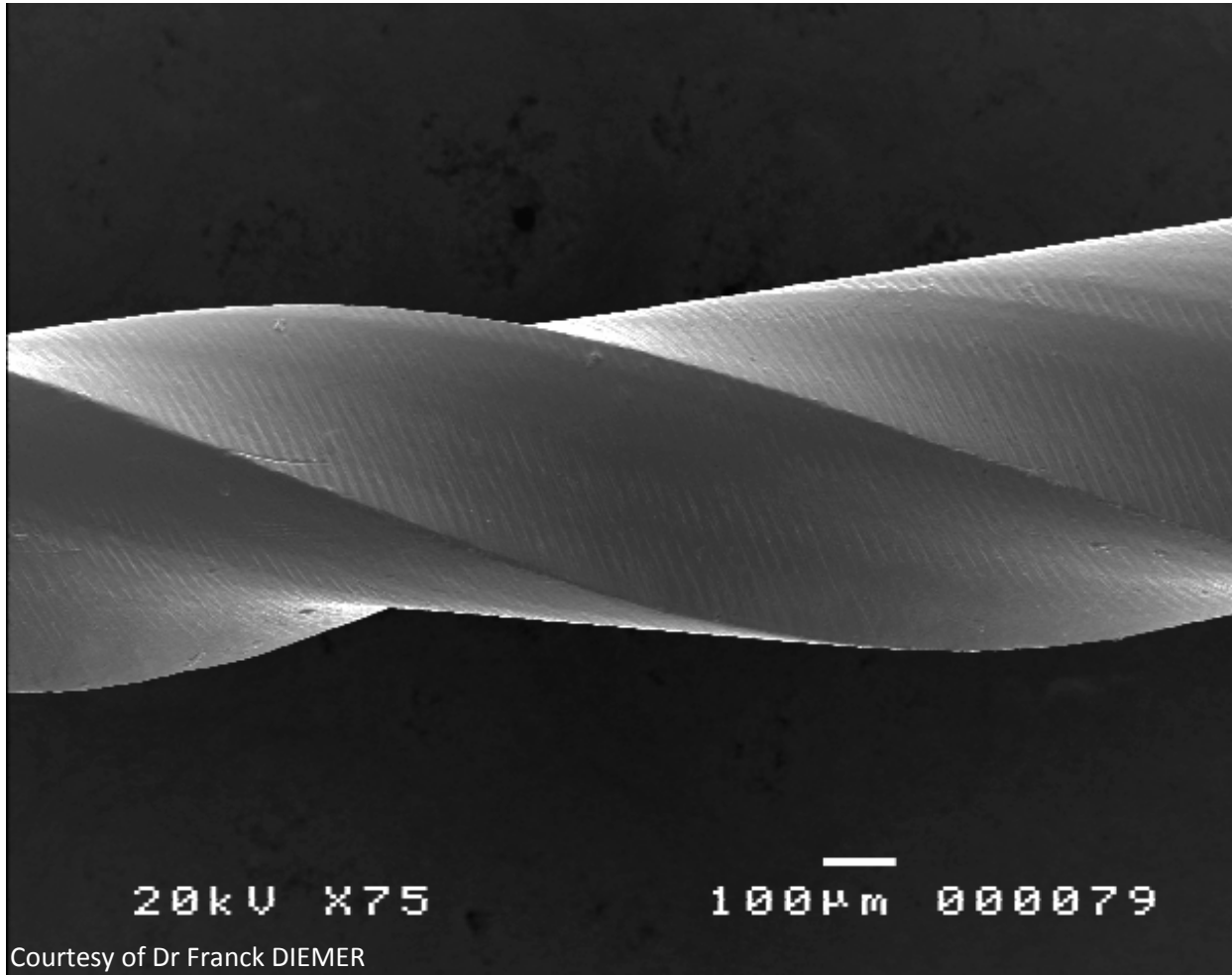
Sanavis Group

G-Files SEM views



Your Endo Specialist™

G1



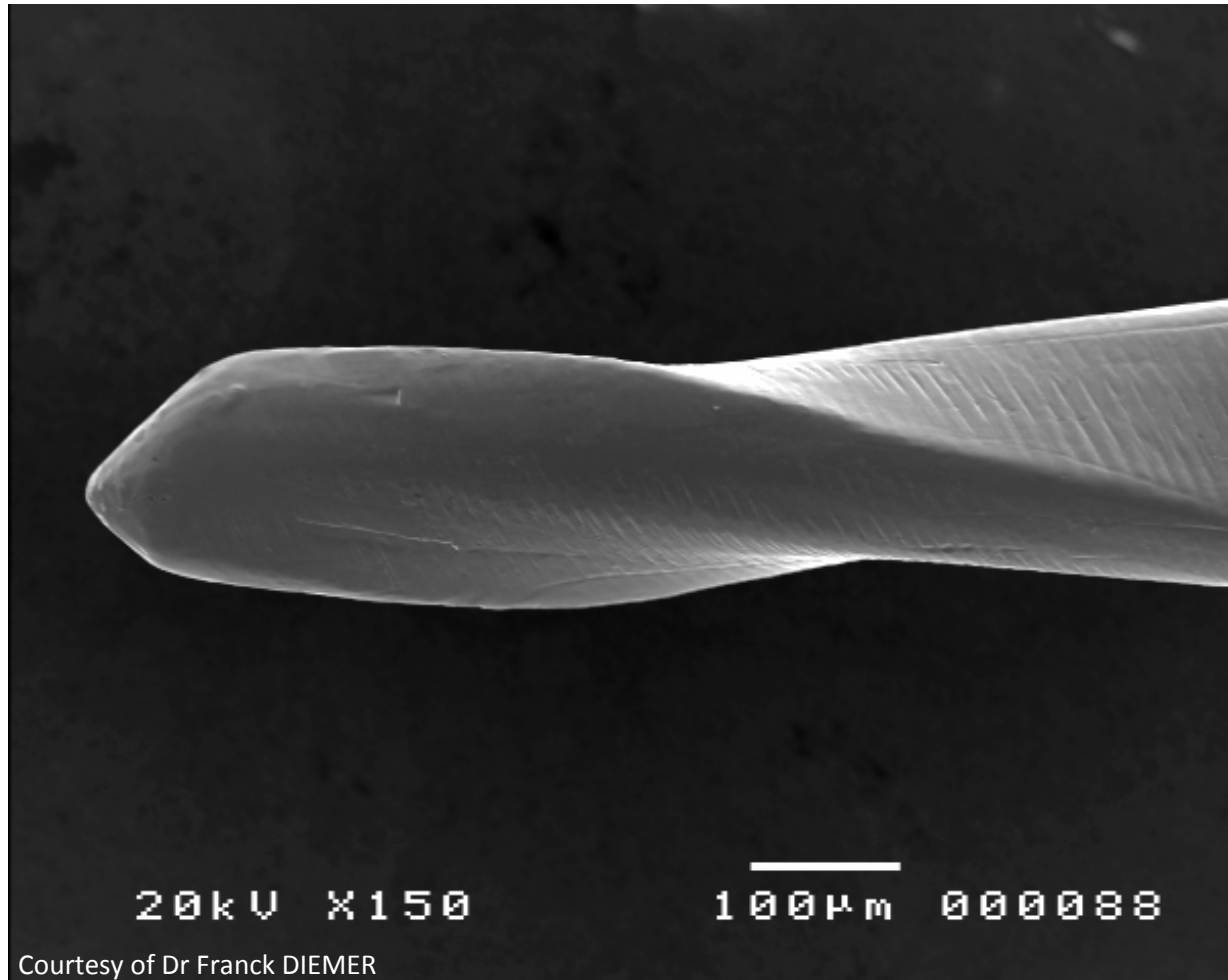
Sanavis Group

G-Files SEM views



Your Endo Specialist™

G1



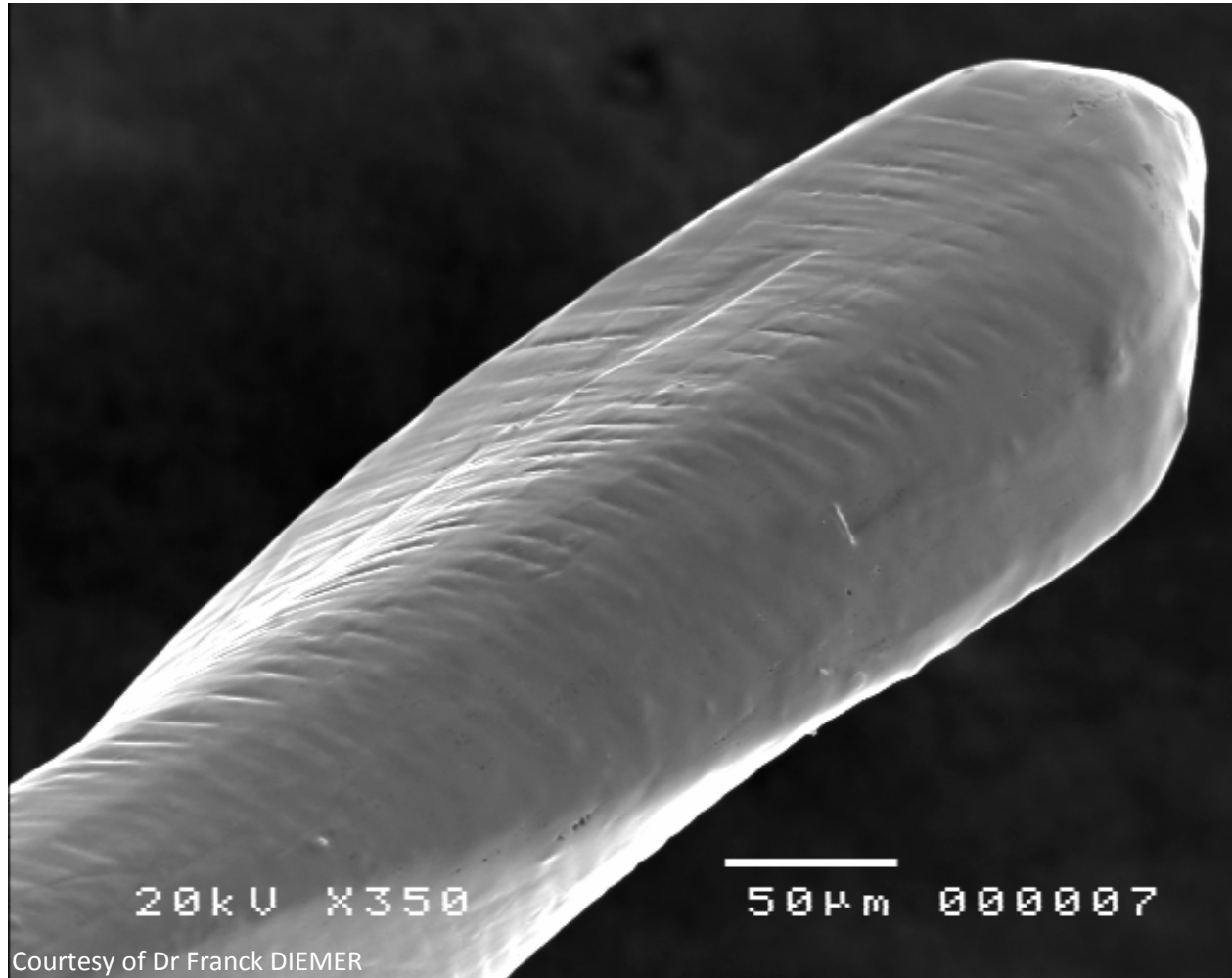
Sanavis Group

G-Files SEM views



Your Endo Specialist™

G1



Courtesy of Dr Franck DIEMER



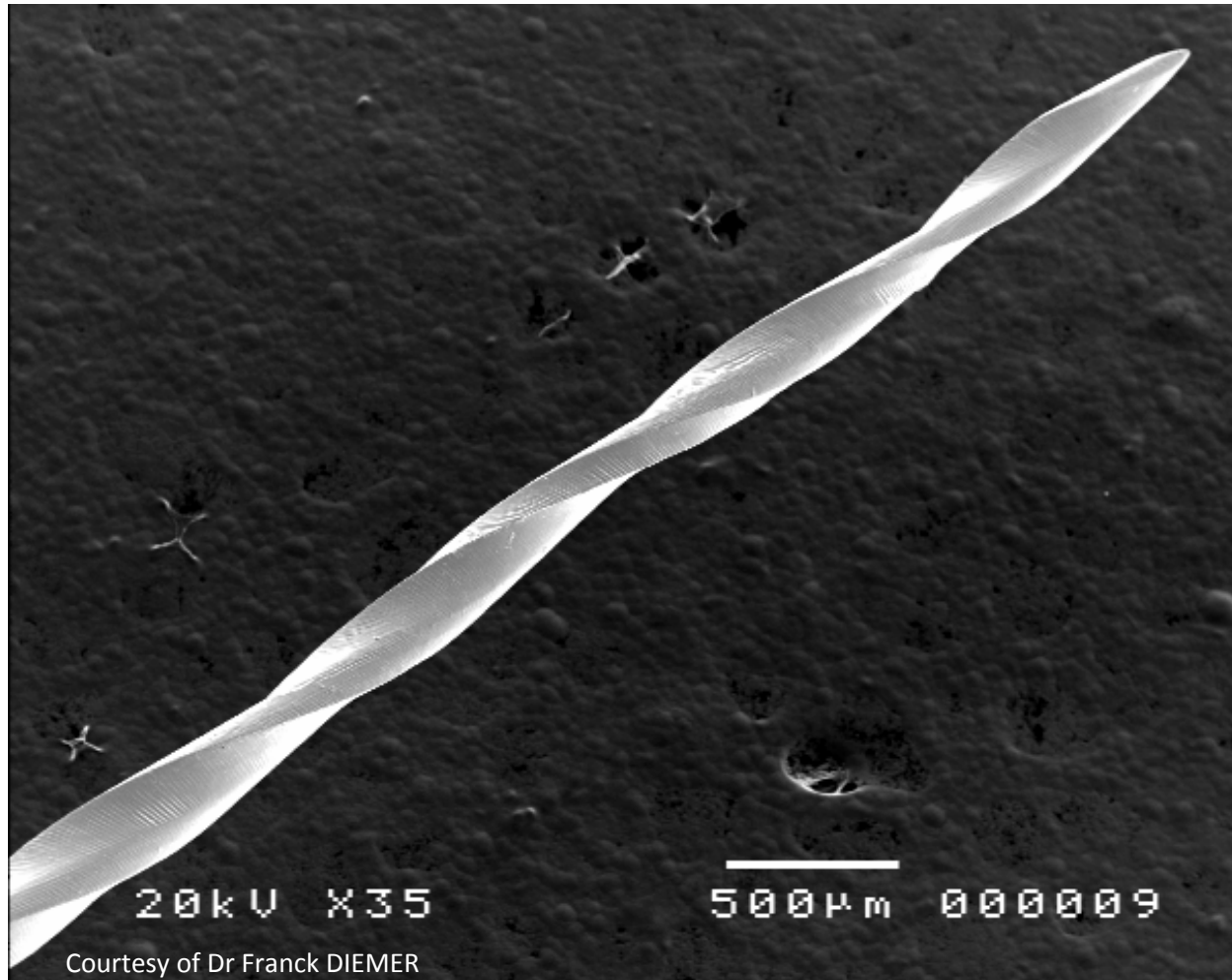
Sanavis Group

G-Files SEM views



Your Endo Specialist™

G2



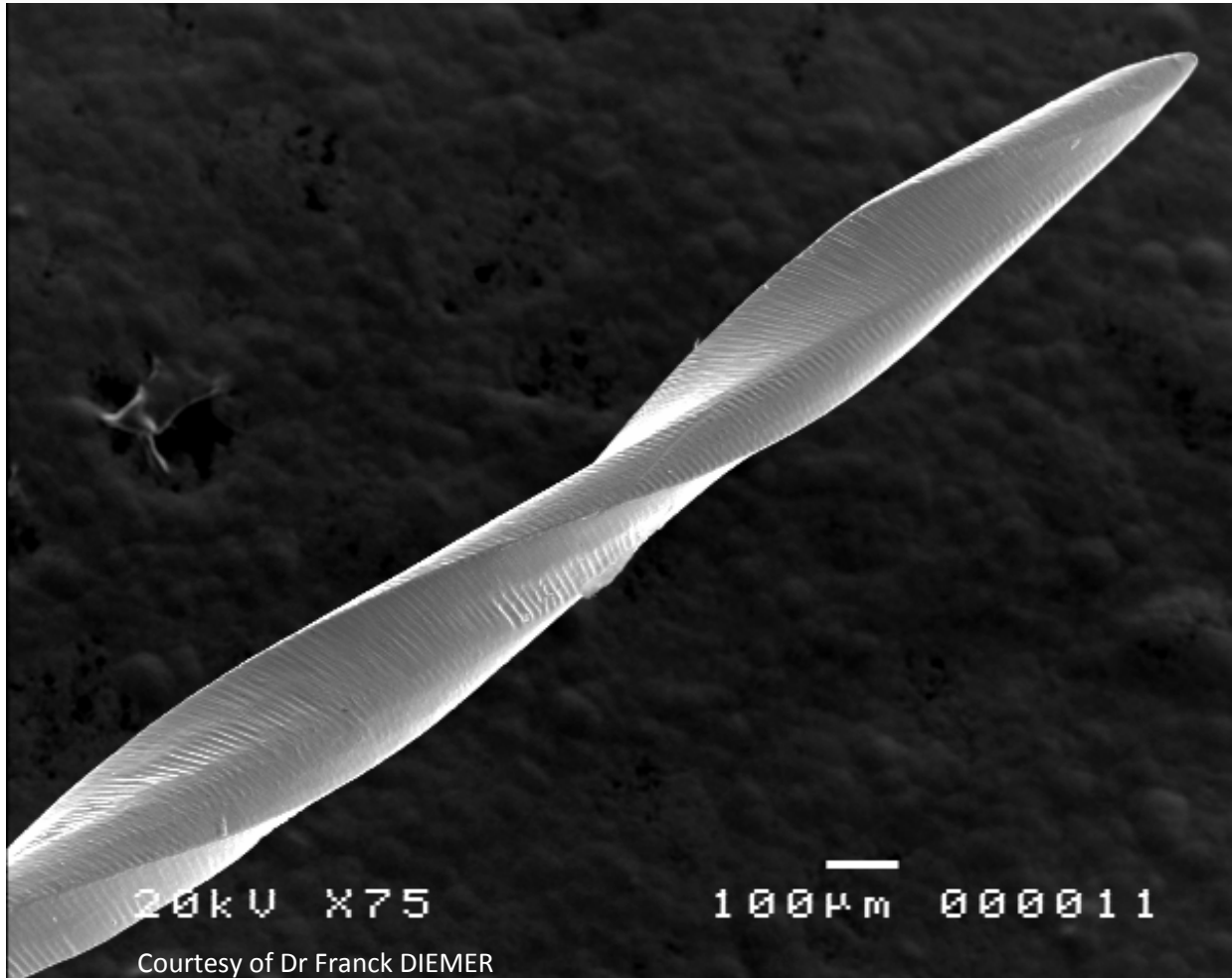
Sanavis Group

G-Files SEM views



Your Endo Specialist™

G2



Sanavis Group

G-Files



Your Endo Specialist™

- Description
- Protocol
- Summary of advantages
- Clinical cases / SEM views
- **Additional points**



Sanavis Group

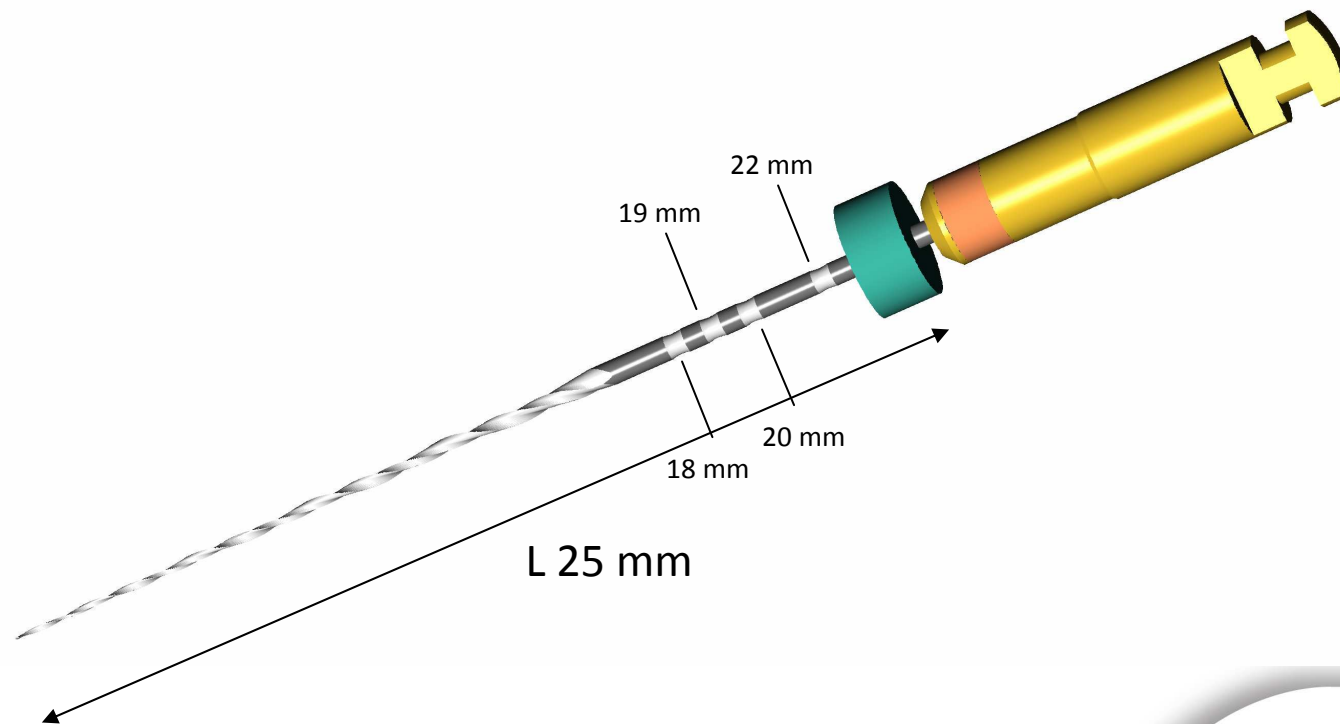
G-Files



Your Endo Specialist™

- **Additional points**

- **Laser marking of the WL: 18-19-20 mm + 22mm + 24mm**



Sanavis Group

G-Files



Your Endo Specialist™

- **Additional points**

- **Packaging:**

- 4 files per pack

- Assortment: G1x2 + G2x2

- Individual size: G1x4 and G2x4

- Classics and InGeT® – sterile and not sterile

- See list of references



Sanavis Group

G-Files



Your Endo Specialist™

Reference	Designation GB	Type of shank	Length
20148001	Pack of 4 assorted G-files (2xG1 et 2xG2)	Classics	L21mm
20148002	Pack of 4 assorted G-files (2xG1 et 2xG2)	Classics	L25mm
20148003	Pack of 4 assorted G-files (2xG1 et 2xG2)	Classics	L29mm
20148101	Pack of 4 assorted G-files (2xG1 et 2xG2)	InGeT	L21mm
20148102	Pack of 4 assorted G-files (2xG1 et 2xG2)	InGeT	L25mm
20148103	Pack of 4 assorted G-files (2xG1 et 2xG2)	InGeT	L29mm
20148011	Pack of 4 G-files G1	Classics	L21mm
20148012	Pack of 4 G-files G1	Classics	L25mm
20148013	Pack of 4 G-files G1	Classics	L29mm
20148111	Pack of 4 G-files G1	InGeT	L21mm
20148112	Pack of 4 G-files G1	InGeT	L25mm
20148113	Pack of 4 G-files G1	InGeT	L29mm
20148021	Pack of 4 G-files G2	Classics	L21mm
20148022	Pack of 4 G-files G2	Classics	L25mm
20148023	Pack of 4 G-files G2	Classics	L29mm
20148121	Pack of 4 G-files G2	InGeT	L21mm
20148122	Pack of 4 G-files G2	InGeT	L25mm
20148123	Pack of 4 G-files G2	InGeT	L29mm
20948011	Blister of 5 G-files G1	Classics	L21mm
20948012	Blister of 5 G-files G1	Classics	L25mm
20948013	Blister of 5 G-files G1	Classics	L29mm
20948111	Blister of 5 G-files G1	InGeT	L21mm
20948112	Blister of 5 G-files G1	InGeT	L25mm
20948113	Blister of 5 G-files G1	InGeT	L29mm
20948021	Blister of 5 G-files G2	Classics	L21mm
20948022	Blister of 5 G-files G2	Classics	L25mm
20948023	Blister of 5 G-files G2	Classics	L29mm
20948121	Blister of 5 G-files G2	InGeT	L21mm
20948122	Blister of 5 G-files G2	InGeT	L25mm
20948123	Blister of 5 G-files G2	InGeT	L29mm

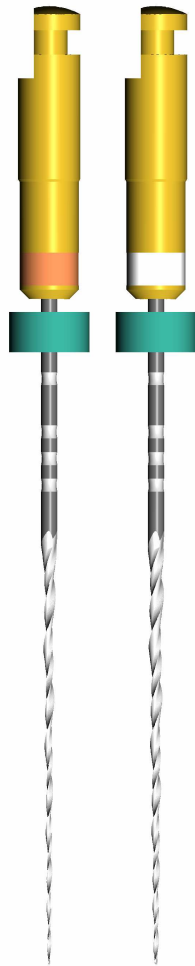
- **Additional points: references**



Sanavis Group



Your Endo Specialist™



Thank you for your attention!



Sanavis Group